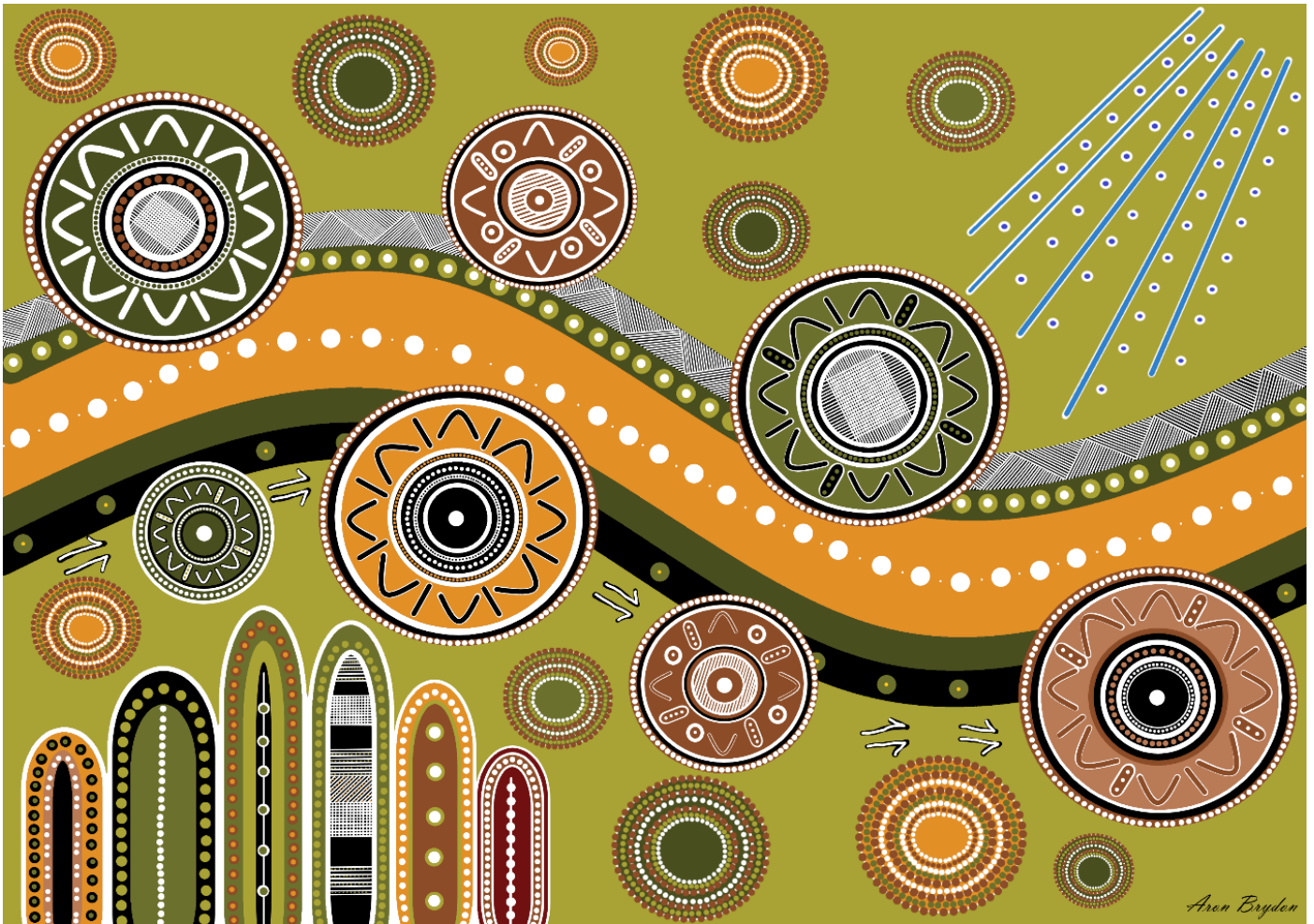


Learner Handbook



Contents

Introduction.....	3
About Saltbush Training Services.....	3
Our Services	3
Our mission	3
Our objectives	3
Finding Us	3
Parking.....	3
Public Transport	4
Lunch Options	4
Our Trainers	4
Our expectation of you.....	4
Unique Student Identifier	5
Your safety	5
Your equity	6
Your privacy.....	7
National VET Data Policy.....	7
Fees payable	8
Refunds.....	8
Statutory cooling off period	9
Our Guarantee to Clients.....	9
Changes to terms and conditions.....	9
Protection under Australian Consumer Law	9
Accessing your records	9
Continuous improvement	10
Assessment	10
Re-assessment	11
Issuing Qualifications and Statements of Attainment.....	11
Learner support services.....	12
Language, literacy & numeracy skills	12
Making complaints & appeals	13
Withdrawing from a course	16
Learner who are not contactable or not responding	16
Recognition of Prior Learning.....	17
Legislative and Regulatory Responsibilities.....	18

Introduction

This information booklet is designed to provide you with information about the services provided by the Saltbush Training Services and our approach to providing you a safe, fair and supported environment to participate in training and assessment. This handbook does not provide you with specific information about a course offered by Saltbush Training Services. This information is contained in the Course Brochure which is supplied separately.

About Saltbush Training Services

Saltbush Social Enterprises, which trades as Saltbush Training Services, is a Registered Training Organisation (Code: 46180) providing high-quality training to learners in Australia. Saltbush Training Services has modern, up to date facilities, and boasts a team of qualified and dedicated Trainers. You can find out more about Saltbush Training Services at the following websites:

www.saltbushnt.org.au

www.training.gov.au

Saltbush Training Services is responsible under its registration with the Australian Skills Quality Authority for the quality of the training and assessment being delivered on your chosen course and is also responsible for the issuance of any AQF certificate that may result based on your achievement of the course requirements.

Our Services

Saltbush Training Services provides training and assessment services in support of the following nationally endorsed training products:

- CHC30125 Certificate III in Early Childhood Education and Care
- CHC50125 Diploma of Early Childhood Education and Care
- CHC40321 Certificate IV in Child, Youth and Family Intervention
- 11055NAT Course in Mentoring for Aboriginal and Torres Strait Islander Workforce Mentors
- SITSS00069 Food Safety Supervision Skill Set

Our mission

Saltbush Training Services mission is to deliver quality training assessment that meets the needs of learners and industry.

Our objectives

In recognition of this mission, our objectives are:

- **People.** We strive to attract, recruit and retain talented, competent and committed trainers. We promote excellent performance through leadership and professional development.
- **Safety & equality.** We are committed to providing an environment which is safe, equitable and which promotes a confident and productive training and assessment environment.
- **Integrity & ethics.** We conduct ourselves in accordance with shared and agreed standards of behaviour which holds ethical conduct and integrity as our highest priorities.
- **Quality committed.** We aspire to deliver consistent, high quality services and apply quality systems which support training and assessment excellence.
- **Learner Focused.** We thrive on providing training and assessment that is learner focused and which supports lifelong learning. We respect our learners and strive to attract them time after time through high quality training and assessment experiences.
- **Industry engagement.** We recognise the value of industry engagement as the driving force in shaping our training and assessment strategies. We deliver training and assessment services which are founded on industry needs and expectations.

Finding Us

We are located at:

9 Nylander Street, Parap NT 0820

Parking

Whilst you are attending our site by vehicle, you can park either in front of our premises or in the

parking lot behind the main office.

Public Transport

There is a Bus Stop on the Stuart Highway, a short walk from the Saltbush Training Services office. Services through this bus route occur approximately every 15-30 minutes.

Lunch Options

If you are looking to buy lunch whilst you are at our premises, we have a large number of take away shops, cafes and restaurants nearby with plenty to choose from.

Our Trainers

Our Trainer Assessors are qualified, dedicated professionals who have current industry experience and qualifications in a range of industries. Their industry experience is continually up to date by participating in professional development activities, therefore giving our learners the best practical industry experience.

At Saltbush Training Services we deliver nationally accredited qualifications via training face-to-face and in the workplace. When you study with Saltbush Training Services, your Trainer Assessor will always be there to assist you throughout your course. You can either attend a classroom training environment or receive job visits and even phone or email your Trainer Assessor for advice which means you get the support you need when you need it.

Saltbush Training Services trainers are all professionally qualified trainers and have personal industry and job role experience. Our trainers deliver their training in a way that learners will enjoy.

Our expectation of you

Saltbush Training Services expects you:

- Saltbush Training Services is committed to providing a safe, respectful, inclusive and culturally safe environment for all learners, staff and visitors. All members of the Saltbush community are expected to treat others with dignity and respect

at all times. Saltbush has zero tolerance for vilification, hatred, bullying, harassment or discrimination of any kind, including racism and religious vilification such as antisemitism. Any behaviour that creates an unsafe, offensive or hostile learning or working environment will be taken seriously and managed in accordance with Saltbush Training Services policies and legislative requirements.

- To contribute to learning in a harmonious and positive manner irrespective of gender, race, sexual preference, political affiliation, marital status, disability or religious belief.
- To comply with the rules and regulations of Saltbush Training Services.
- To be honest and respectful, which includes not falsifying work or information and not conducting yourself in any way that may cause injury or offence to others.
- To be responsible for your own learning and development by participating actively and positively and by ensuring that you maintain progress with learning modules.
- To monitor your own progress by ensuring that assessment deadlines are observed.
- To utilise facilities and Saltbush Training Services publications with respect and to honour our copyrights and prevent our publication from being distributed to unauthorised persons.
- To respect other learners and Saltbush Training Services staff members and their right to privacy and confidentiality
- We expect all First Nations people to be respected and contribute to the cultural safety of all people in this learning environment.

Unique Student Identifier

You will be required to have a Unique Student Identifier (USI) to study nationally recognised training in Australia. Your USI links to an online account that contains all your training records and results (transcript) that you have completed from 1 January 2015 onwards.

When applying for a job or enrolling in further study, you will often need to provide your training records and results (transcript). One of the main benefits of the USI is the ability to provide learners with easy access to their training records and results (transcript) throughout their life. You can access your USI account online from your computer, tablet or smart phone anytime. Fact sheets are available to download [Student Information for the USI](#)

It's free and easy to [create your own USI](#) and will only take a few minutes of your time. Alternatively, we can create your USI on your behalf. To do this we will need some additional identification information from you such as your driver's licence number.

Learners are advised that there are a number of unique circumstances where a person may be exempt from requiring a USI. These do not apply to the vast majority of learners in Australia. The USI Exemption Table is available from the USI website which explains these circumstances [Click Here](#). Learners who exercise an exemption from submitting a USI should be aware that the results of the training will not be accessible through the Commonwealth and will not appear on any authenticated VET transcript prepared by the USI Registrar. Further details about the implications of being exempt can be obtained from the USI website: [Click Here](#).

Your safety

Saltbush Training Services is committed to providing you a safe environment in which to participate in training and assessment. We are aware under the Work Health and Safety Act 2011 of our responsibilities to maintain a safe environment.

The following guidelines are provided as a basis for safe practice in the training environment:

- Know and observe details of

emergency response and evacuation plans;

- Do not undertake activities which may cause injury to self or others;
- Be responsible for your own actions;
- No smoking at the training and assessment facilities or offices;
- Report all potential hazards, accidents and near misses to the RTO staff;
- No consumption of alcohol within training and assessment facilities or during the conduct of training and assessment;
- Keep training and assessment areas neat and tidy at all times;
- Seek assistance if you volunteer to lift items e.g. move furniture in a training area; and
- Observe hygiene standards particularly in eating and bathroom areas.

Electrical equipment

- Electrical equipment that is not working should be reported to Saltbush Training Services staff.
- Electrical work should only be performed by appropriately licensed or trained personnel. Learners, trainers and assessors should not undertake any task related to fixing electrical equipment such as lighting or electrical training aids.

Fire safety

- Saltbush Training Services will undertake to communicate the procedures involved in evacuation and the location of fire equipment to learners at each facility for each training and assessment event; and to users of the office at least twice each year.
- All users of a training and assessment facility need to be familiar with the location of all EXITS and fire extinguishers. Users will consult available maps to determine location.
- It is the user's responsibility to understand fire drill procedures displayed around the premises.
- Users are asked to attend any sessions on fire safety procedures and the use of fire safety devices.

First aid

- Provision for first aid facilities are available where training is delivered.
- All accidents must be reported to staff.
- The accident and any aid administered must be recorded by staff involved, in the injury register.

Lifting

- Learners, trainers and assessors are encouraged not to lift anything related to the training and assessment provided by Saltbush Training Services unless they do so voluntarily and taking all responsibility for any injury caused.
- Never attempt to lift anything that is beyond your capacity.
- Always bend the knees and keep the back straight when picking up items.
- If you have experienced back problems in the past do not attempt to lift heavy objects at all. Ask someone else to do it for you.

Work & study areas

- Always ensure that all work areas are clean and clear of clutter so as to avoid the danger of accident by tripping or falling over.
- Place all rubbish in the bins provided.
- Ensure that bench spaces are left clean and tidy.
- Do not sit or climb on any desks or tables.

Wellbeing

At Saltbush Training, we recognise that wellbeing is key to learning success. That's why the health, safety and wellbeing of our students is a core priority.

We know personal challenges can sometimes make you feel overwhelmed or unsafe and we are committed to providing a safe, respectful and supportive learning environment where you can ask for help without hesitation.

We take all concerns about bullying, harassment or unsafe behaviour seriously and will act promptly to address them.

If anything is affecting your wellbeing during your studies, please contact our Training Team on **(08) 7915 7001** or

email training@saltbushnt.org.au.

Your wellbeing is important to us, and we're here to support you throughout your training journey.

Links to Supports

Learner Support – Health and Wellbeing: NT Referral Contacts

We can also connect you with local services for support, you do not need to face it alone. Below are trusted support services available across the Northern Territory.

Crisis & 24/7 Mental Health Support

- NT Mental Health Line (24/7 statewide mental health support) – **1800 682 288**
- Lifeline (confidential 24/7 crisis support) – **13 11 14**
- Suicide Call Back Service (24/7 phone & online counselling) – **1300 659 467**
- Kids Helpline (support for children/youth 5–25 yrs) – **1800 551 800**

Community & Wellbeing Support Services (Non-Crisis)

- Connect to Wellbeing – NT › integrated mental health & wellbeing support – **1800 595 212** or connecttowellbeing@neaminational.org.au
- Relationships Australia NT – counselling & family support services – **1300 458 600**
- Beyond Blue – mental health info & support – **1300 224 636**
- Mens Line Australia – support for men with stress, family/work issues – **1300 789 978**

Your equity

Saltbush Training Services is committed to ensuring that the training and assessment environment is free from discrimination and harassment. All Saltbush Training Services staff members (including contractors) are aware that discrimination and harassment will not be tolerated under any circumstances.

In the event that discrimination and harassment is found to have occurred disciplinary action will be taken against any staff member who breaches this policy. Suspected criminal behaviour will be reported to police authorities immediately. Learners should expect fair and friendly behaviour from Saltbush Training Services staff members and we apply complaint handling procedures advocated by the Australian Human Rights and Equal Opportunity Commission (HREOC).

Learners who feel that they have been discriminated against or harassed should report this information to a staff member of Saltbush Training Services that they feel they can trust. This

will initiate a complaints handling procedure which will be fair and transparent and will protect your rights as a complainant. Alternatively, if a learner wishes to report an instance of discrimination or harassment to an agency external to Saltbush Training Services, they are advised to contact the HREOC Complaints Info-line on 1300 656 419.

Your privacy

Saltbush Training Services takes the privacy of learners very seriously and complies with all legislative requirements. These include the Privacy Act 1988 and Australian Privacy Principles (effective from 12th March 2014).

Here's what you need to know:

- Saltbush Training Services will retain personal information about you relating to your enrolment with us. This includes your personal details, your ethnicity and individual needs, your education background. We will also retain records of your training activity and are required to do this in accordance with the National Vocational Education and Training Regulator Act 2011.
- Your personal information is retained within our hard copy filing system and our computer systems. Your information is collected via the enrolment form and through your completion of administrative related forms and based on your training outcomes. Hard copy files are secured in lockable filing cabinets which are monitored throughout the day and secured in the evening. Electronic data retained on our computer systems is protected via virus protection software and firewall protection. Our data is backed up continuously to our server which is secure.
- Saltbush Training Services is required by the National Vocational Education and Training Regulator Act 2011 to securely retain your personal details for a period of 30 years from the date your enrolment has completed. The purpose of this is to enable your participation in accredited training to be recorded for future reference and to allow you to obtain a record of your outcome if required.
- In some cases, we are required by law to make learner information available to Government agencies such as the National

Centre for Vocational Education and Research or the Australian Skills Quality Authority. In all other cases Saltbush Training Services will seek the written permission of the learner for such disclosure. Saltbush Training Services will not disclose your information to any person or organisation unless we have written instructions from you to do so. If you require your records to be accessed by persons such as your parents, you need to authorise this access otherwise this access will be denied.

- You have the right to access information that Saltbush Training Services is retaining that relates to you. Further instructions are provided on how to access records within the section titled "Access to your records".
- If you have concerns about how Saltbush Training Services is managing your personal information, we encourage you to inform our staff and discuss your concerns. You are also encouraged to make a complaint directly to us using our internal complaint handling arrangements outlined in this handbook. Under the Privacy Act 1988 (Privacy Act) you also have the right to make a complaint to the Office of the Australian Information Commissioner (OAIC) about the handling of your personal information. You can find more information about making a privacy complaint at the website of the OAIC located at: <http://www.oaic.gov.au/privacy/privacy-complaints>.

National VET Data Policy

As part of your enrolment, you will be asked to declare your acceptance of the terms of the service contract and the refund conditions and confirm that you have been fully advised of the fees, refund conditions and conditions of enrolment and agree to be a student at Saltbush Training Services.

You agree that it is your responsibility to retain a copy of this written agreement as supplied by Saltbush Training Services and receipts of any payments of tuition fees or non-tuition fees.

You agree that under the Data Provision Requirements 2012, Saltbush Training Services is required to collect personal information about you and to disclose that personal information to the National Centre for Vocational Education Research Ltd (NCVER).

Your personal information (including the personal information contained on the enrolment form and

your training activity data) may be used or disclosed by Saltbush Training Services for statistical, regulatory and research purposes. Saltbush Training Services may disclose your personal information for these purposes to third parties, including:

- School – if you are a secondary student undertaking VET, including a school-based apprenticeship or traineeship;
- Employer – if you are enrolled in training paid by your employer;
- Commonwealth and State or Territory government departments and authorised agencies;
- NCVER;
- Organisations conducting student surveys; and
- Researchers.

Personal information disclosed to NCVER may be used or disclosed for the following purposes:

- issuing a VET Statement of Attainment or VET Qualification, and populating Authenticated VET Transcripts;
- facilitating statistics and research relating to education, including surveys;
- understanding how the VET market operates, for policy, workforce planning and consumer information; and
- administering VET, including program administration, regulation, monitoring and evaluation.

You may also receive an NCVER student survey which may be administered by an NCVER employee, agent or third-party contractor. You may opt out of the survey at the time of being contacted.

NCVER will collect, hold, use and disclose your personal information in accordance with the Privacy Act 1988 (Cth), the VET Data Policy and all NCVER policies and protocols (including those published on NCVER's website at www.ncver.edu.au).

Fees payable

Fees are payable when a learner has received a confirmation of enrolment. The initial fee payment must be paid prior to commencing training or within 5 days of receiving an invoice from Saltbush Training Services. Saltbush Training Services may discontinue training if fees are not paid as required. For a full list of current fees and

charges please request a copy of Saltbush Training Services schedule of fees and charges.

Learner cancellation

Learners who cancel their enrolment part way through a training program must notify Saltbush Training Services in writing via email or letter at the soonest opportunity. Learners who cancel their enrolment after a training program has commenced will not be entitled to a refund of fees. Learners are advised to consider alternative options such as requesting to suspend their enrolment and re-commencing in another scheduled training program.

Replacement of text & training workbooks

Learners who require replacement of issued text or training workbooks will be liable for additional charges to cover the cost of replacement. For a full list of replacement charges please refer to Saltbush Training Services schedule of fees and charges.

Refunds

Learners, who give notice to cancel their enrolment **10 business days** or more prior to the commencement of a program, will be entitled to a full refund of fees paid (less any non-refundable amounts).

Learners who give notice to cancel their enrolment **9 business days** or less prior to the commencement of a program will be entitled to a 75% refund of fees paid. The amount retained (25%) by Saltbush Training Services is required to cover the costs of staff and resources which will have already been committed based on the learners' initial intention to undertake the training.

Learners who cancel their enrolment after a training program has commenced will not be entitled to a refund of fees.

Where a learner has purchased a text or training workbooks and subsequently cancels, Saltbush Training Services will not refund monies for the text.

Payment method

Saltbush Training Services accepts payment for fees using:

- Credit Card
- Electronic Funds Transfer (account details available on request)
- Cheque (made payable to Saltbush

Training Services)

- Payment in cash is discouraged.

Substitutions

Requests for substitutions are to be made in writing and can be made at any time up to 2 working days before the program commencement date.

Transfers

Requests for transfers to alternate programs can be arranged if Saltbush Training Services is advised in writing more than 10 working days prior to the program commencement date and there is availability on the selected program. One transfer will be accepted without charge where Saltbush Training Services has been notified in writing at least 10 working days prior to the scheduled commencement date. All subsequent transfers will attract a fee. Please refer to Schedule of Fees and Charges.

Statutory cooling off period

The current regulatory requirements for Saltbush Training Services to inform persons considering enrolment of their right to a statutory cooling off period. A statutory cooling off period (which is 10 working days) is a period of time provided to a consumer to allow them to withdraw from a consumer agreement, where that agreement was established through unsolicited marketing or sales tactics. These include tactics such as door-to-door sales and telemarketing. A statutory cooling off period allows a consumer to withdraw from a sales agreement within 10 working days of having received a sale contract without penalty.

It must be noted that Saltbush Training Services do not engage in unsolicited marketing or sales tactics and therefore a statutory cooling off period is not applicable to our learners who have enrolled into a program. For refund option in other circumstances, learners must refer to the above refund policy.

Our Guarantee to Clients

If Saltbush Training Services cancels or ceases to provide training, Saltbush Training Services must issue a full refund for any

services not yet provided. The basis for determining "services not yet provided" is to be based on the units of competency completed by the learner and which can be issued in a statement of attainment at the time the service is ceased.

As an example: A learner enrolled in a course of 10 units of competency and paid \$1,500.00 up front as the total course fee. The course was cancelled due to the trainer falling ill and the learner at that time had completed 4 of the 10 units. The learner's enrolment would be finalised and the learner would receive a Statement of Attainment for the 4 completed units. The learner would also receive a refund of \$900.00 which represents that value of the training not delivered.

Saltbush would like learners to note that there is no guarantee of a job at the completion of your course.

Changes to terms and conditions

Saltbush Training Services reserves the right to amend the conditions of the student's enrolment at any time. If amendments are made that effect the student's enrolment the student will be informed 7 days prior to changes taking effect. Students then have 28 days to submit an appeal from the date they were informed of the decision. Further information about appealing a decision is contained in the section relating to complaints and appeals handling.

Protection under Australian Consumer Law

As a student undertaking a vocational education and training course, you are protected under Australian Consumer Law and under State and Territory consumer protection laws. These protections include areas such as unfair contract terms, the consumer guarantees, to statutory a cooling-off period, and unscrupulous sales practices. You can find out more information about your rights as a consumer from the Australian Consumer Law website which includes a range of helpful guides relating to specific areas of protection. Please visit the following site for more information: [Australian Consumer Law](#).

Accessing your records

You are entitled to have access to your records.

These records include your:

- learner file,
- learning and assessment record,
- administrative records,
- AQF certificates including a reissuance of a statement of attainment or qualification which has been previously issued.

You may require these records to monitor your progress with training or simply to go back and confirm something in a previous training module. Whilst these records will be retained by Saltbush Training Services, you are welcome to have access anytime just ask your trainer and it will be organised immediately.

You can access hard copy records and reports from our learner management system, but only relating to you personally. You can request this access using the Learner Records Request Form. Access to requested records during a workday will be arranged as soon as possible and definitely within 24 hours. Learners should note that these records cannot be taken away unless a copy is requested. Where photocopies are requested, Saltbush Training Services reserves the right to charge a one-off photocopy fee. Please refer to our Schedule of Fees and Charges for prices. There is no cost to simply view records at our office.

In the case of accessing a reissuance of a previously issued Statement of Attainment or Qualification certificate, if you have lost or misplaced your AQF certificate you may obtain a reissued certificate from Saltbush Training Services. To obtain this you must complete the Learner Records Request Form and return this to the Training Manager. The cost of \$33.00 (Includes GST) will apply for each issued AQF certificate. These monies must be paid in advance. Reissued AQF certificates will be an exact duplicate of the original with the exception of small wording at the bottom of the document which identifies the certificate as reissued. AQF certificates may only be collected in person or can be posted via registered post. A learner may also nominate another person to collect the certificate, however these persons must be notified to Saltbush Training Services

beforehand and the person must provide photo ID to validate their identity.

Continuous improvement

Saltbush Training Services is committed to the continuous improvement of our training and assessment services, learner services and management systems. Central to this commitment is our approach to continuous improvement and the procedures we apply to achieve systematic and sustained improvement.

Suggesting improvements

The primary method of reporting opportunities for improvement by learners is via the continuous improvement reporting procedure. This procedure allows any person to raise a Continuous Improvement Report for consideration by the Continuous Improvement Committee. Often these reports will be generated after an opportunity for improvement has been identified by a staff member or learner. The Continuous Improvement Report template is available on request. Learners are encouraged to provide feedback to Saltbush Training Services so we can improve our services in the future.

Learner satisfaction survey

At the completion of your training program, you will be issued with a Learner Satisfaction Survey. This is a nationally consistent survey tool which is designed to collect feedback from learners about their experience with an RTO and in undertaking nationally recognised training. Your completion and return of this survey is important to Saltbush Training Services for our ongoing improvement of services and to enable us to report this information to our registering authority. Your assistance in gathering this survey data is greatly appreciated.

Assessment

At Saltbush Training Services assessment is conducted using a combination of Written Knowledge Assessment, Research Tasks, Case Studies, Work Logbook, Supervisor Feedback and Workplace Observation.

The following provides a brief explanation of the primary assessment methods:

- **Written Knowledge Assessment:** The learner is required to provide a written response to a range of questions relating to required knowledge of the units of competency. These would generally be short answer response activities and may include other questioning methods including multiple-

choice.

- **Research Tasks:** The learner is required to undertake research within their own workplace and the available reference material and provide a written response to each question. These assessment activities are usually short to medium answer response activities. The responses provided by the learner will largely be specific to their workplace.
- **Case Study Response:** The learner is required to provide a written response to a situation presented in a case study scenario. This will usually require the learner to consider carefully the situation presented, undertake some research to inform their response and then to propose their recommended actions.
- **Workplace Logbook:** The learner is required to record details of their work activity completed during the work placement. These details are recorded against specified tasks which are predesigned for the learner to complete. This forms an important part of the assessment evidence as it often includes critical evidence that is otherwise difficult for the assessor to observe.
- **Supervisor Feedback:** The assessor will periodically engage with workplace supervisors to seek their feedback about the learner's performance. This is undertaken as an interview with a duration of approximately 15 to 20 minutes. This interview can be undertaken over the phone or face to face. Feedback from a supervisor is recorded into the assessment record.
- **Workplace Observation:** The learner will be observed performing specific tasks in their day-to-day work activities. The assessor will attend the workplace and observe the learner performing tasks relevant to the units of competency being assessed. The learner will be briefed on these observation activities in events and is required to make arrangements to undertake these activities when the assessor is in attendance at the workplace.

Re-assessment

Learners who are assessed as not yet competent are to be provided with detailed verbal and written feedback to assist them to identify the gaps in their knowledge and skills

to be addressed through further training. These learners are to be provided with additional training and learning support to target their specific gaps in knowledge and/or skills and prepare them for additional assessment.

It is the policy of Saltbush Training Services to provide three opportunities for additional training and re-assessment at no additional cost to the learner or employer. Learners who require additional training and re-assessment after they have exhausted their three opportunities will be required to pay a fee for additional training and re-assessment. Please refer to the current fee schedule to identify the re-assessment fee.

Learners requiring additional learning support are to be brought to the attention of Saltbush Training Services management so the progress of the learner can be monitored closely and additional support services can be applied well before it becomes necessary to impose an additional fee for re-assessment. Where learners repeatedly do not demonstrate competence following significant learning and assessment support, a learner's enrolment can be determined through mutual agreement.

Issuing Qualifications and Statements of Attainment

Saltbush Training Services will issue all Australian Qualification Framework certification documentation (Qualifications or Statements of Attainment) to a student within 30 calendar days of the student being assessed as meeting the requirements of the training product if the training program in which the student is enrolled is complete. Please note however that Saltbush Training Services is not obliged to issue a certificate to a completed student if:

- All agreed fees the student owes to Saltbush Training Services have not been paid.
- The student has not provided a valid Unique Student Identifier.

Students should be aware that a:

Qualification is the result of a student achieving the units of competency for a qualification outcome as specified in an endorsed training package or an accredited course. A qualification is a formal certification that a student has achieved learning outcomes as described in the AQF. Technically within the AQF a qualification is comprised of a testamur and a record of results. A testamur is the actual

official certification document that confirms that a qualification has been awarded to an individual.

- **Statement of Attainment** is issued when the student has achieved one or more units of competency as a result of completing a course which included units of competency only or where the student achieved one or more units of competency as part of an enrolment in a qualification-based course but the student did not achieve all of the units of competency to receive the full qualification.

Learner support services

During your enrolment, Saltbush Training Services will engage with you on a number of occasions to identify if you require any support. We do this through requesting you to complete enrolment documentation which includes an initial core skills assessment, discussions over the phone, enrolment interview and finally during your orientation.

One of the important objectives of these engagements is to understand what support services you may need to fully participate in your study. You will be asked various questions about your support needs or your "individual needs". This is simply the term we use to define what your needs are and this enables us to organise the appropriate support services. Make sure you take the most of this opportunity and let us know if you need support.

What support is available?

Saltbush Training Services will use a combination of our own services and the services of referral agencies to either provide or refer you to the following support services:

- Language, Literacy, Numeracy and digital skills Support.
- Studying and Learning Coaching.
- English as Second Language Tuition.
- Alternative Payment Plan.
- Counselling Support.
- Disability Access. Employment Services Referral.

If you need support during your course, please approach and inform reception and you will be connected with the best person who can assist you. If the matter is sensitive and you do not feel comfortable discussing it with reception, simply inform reception that you would like to meet with the Training Manager. It is our absolute priority to provide you the support needed to enable you to progress in your study and complete your chosen course. Saltbush Training Services is committed to our student's welfare both during and after hours of study.

Language, literacy, numeracy & digital literacy skills - LLND

Language, literacy, numeracy, and digital literacy (LLND) skills are critical to almost all areas of work and personal life. This is particularly true in many vocations where language, literacy, numeracy, technology skills influence the performance of workplace tasks such as measuring, weighing, using software, communication tools, and comprehending written work instructions.

To support this approach, Saltbush Training Services will:

- Assess a LLND skills during enrolment to ensure learners have the adequate skills to complete the training.
- The findings of the these LLND Assessments will support trainers to identify knowledge and skills gaps. Where possible, trainers will then be able to build in additional supports or reasonable adjustments to the assessments whilst still meeting the requirements of each unit of competency.
- Support learners during studies with training and assessment materials and strategies that are easily understood and suitable to the level of the workplace skills being delivered;
- Provide clear information to learners about the details of the language, literacy and numeracy assistance available. Saltbush Training Services generally recommend the LLN training courses provided by TAFE or Community Colleges. These institutes have specialist teachers to support the learner's development.

- Refer learners to external language, literacy and numeracy support services that are beyond the support available within Saltbush Training Services and where this level of support is assessed as necessary; and Negotiate an extension of time to complete training programs if necessary.

Making complaints & appeals

Saltbush Training Services is committed to providing a fair and transparent complaints and appeals process that includes access to an independent external body if required. To make a complaint or an appeal, you are requested to complete one of the following forms:

- Complaint Form
- Request for Appeal of a Decision

These forms are available via our website at the following address:

www.saltbushnt.org.au/training

Once you have completed the required form you are requested to submit this to the Training Manager either in hard copy or electronically via the following contact details:

9 Nylander Street, Parap
training@saltbushnt.org.au

If you are having any difficulty accessing the required form or submitting to us, please contact us at **08 7915 7001**.

What is a complaint?

A complaint is negative feedback about services or staff which has not been resolved locally. A complaint may be received by Saltbush Training Services in any form and does not need to be formally documented by the complainant in order to be acted on. Complaints may be made by any person but are generally made by learners and/or employers.

What is an appeal?

An appeal is an application by a learner for reconsideration of an unfavourable decision or finding during training and/or assessment. An appeal must be made in writing and specify the particulars of the decision or finding in dispute. Appeals must

be submitted to Saltbush Training Services within **28 days** of the learner being informed of the decision or finding.

Early resolution of complaints & appeals

In all cases, issues that arise during training and assessment that are the source of frustration or are in dispute should be resolved at the time, as they occur between the persons involved, where possible. Sometimes, it will not be possible and in these cases, you are encouraged to come forward and inform us of your concerns with the confidence that you will be treated fairly.

Complaint and appeals handling

Saltbush Training Services applies the following principles to its complaints and appeals handling:

- A complaint or appeal may be received in any form (written, verbal) although persons seeking to make a complaint are recommended to complete the complaint form or request for an appeal of a decision which are available on the Saltbush Training Services website.
- A person who makes a complaint or an appeal must be **provided a written acknowledgement** as soon as possible and **not later than 24 hours** from the time the complaint or the appeal is received. The acknowledgement must inform the person that they will receive a written response within 14 days and explain the complaint/appeal handling process and the persons rights and obligations.
- There is no time limitation on a person who is seeking to make a complaint. An appeal however must be made within 28 days of the person being informed of the decision or finding of which they intend to appeal.
- Written records of all complaints / appeals are to be kept by Saltbush Training Services including all details of lodgement, response and resolution. Saltbush Training Services will maintain complaints / appeals register to be used to record the details of the complaint / appeal and to maintain a chronological journal of events during the handling process. Records relating to complaint / appeal handling are stored securely to prevent

access to unauthorized personnel.

- A person making a complaint or seeking an appeal is to be provided an opportunity to formally present his or her case at no cost.
- Each person may be accompanied and/or assisted by a support person at any relevant meeting.
- Where a complaint or appeal is made about or involves allegations about another person, Saltbush Training Services is obliged to inform this person about this complaint/appeal or allegation and provide them the opportunity to respond and present information in response to the issues raised. This may be achieved through direct meetings or meeting via an electronic means. Saltbush Training Services will maintain a detailed record of these meetings in the form of a record of conversation. At all times information must be handled sensitively and treated in confidence. Persons involved in a dispute or complaint should be reminded to treat each other with respect and conduct themselves in a professional and courteous manner.
- The handling of a complaint / appeal is to commence within **seven (7) working days** of the lodgement of the complaint / appeal and all reasonable measures are taken to finalise the process as soon as practicable.
- The person making a complaint or seeking an appeal is to be provided a written response to the complaint / appeal, including details of the reasons for the outcome. A written response must be provided to the person within **fourteen (14) days** of the lodgement of the complaint / appeal.
- Complaints / appeals must be resolved to a final outcome **within sixty (60) days** of the complaint / appeal being initially received. Where Saltbush Training Services Chief Executive Officer considers that more than 60 calendar days are required to process and finalise the complaint / appeal, the CEO

must inform the person making a complaint or seeking an appeal in writing, including reasons why more than 60 calendar days are required. As a benchmark, Saltbush Training Services will attempt to resolve complaints/appeals as soon as possible. A timeframe to resolve a complaint/appeal within thirty (30) days is considered acceptable and in the best interest of Saltbush Training Services and the person making a complaint or seeking an appeal. A person making a complaint or seeking an appeal should also be provided with regular updates to inform them of the progress of the complaint/appeal handling. Updates should be provided to the person making a complaint or seeking an appeal at a minimum of two (2) weekly intervals.

- Saltbush Training Services shall maintain the enrolment of the person making a complaint or seeking an appeal during the handling process.
- Decisions or outcomes of the complaint / appeal handling process that find in the favour of the person making a complaint or seeking an appeal shall be implemented immediately.
- Complaints / appeals are to be handled in the strictest of confidence. No Saltbush Training Services representative will disclose information to any person without the permission of Saltbush Training Services Chief Executive Officer. A decision to release information to third parties can only be made after the person making a complaint or seeking an appeal has given permission for this to occur. This permission should be given using the Information Release Form.
- Complaints / appeals are to be considered and handled to ensure the principles of natural justice and procedural fairness are applied at every stage of the handling process. This means that the person making a complaint or seeking an appeal is entitled to be heard with access to all relevant information and with the right of reply. The

person making a complaint or seeking an appeal is entitled to have their complaint heard by a person that is without bias and may not be affected by the decision. Finally, the decision must be made based on logical evidence and the decision-maker must take account of relevant considerations, must act for a proper purpose and must not take into account irrelevant considerations.

Informing Persons and Responding to Allegations

Where a complaint involves one person making allegations about another person, it is a requirement for Saltbush Training Services to hear both sides of the matter before making any judgements about how the complaint should be settled. A person who will be affected by a decision made by Saltbush Training Services because of a complaint has the right to be fully informed of any allegations and to be provided adequate opportunity to be heard and respond. The person has the right to:

- put forward arguments in their favour,
- show cause why a proposed action should not be taken,
- deny allegations,
- call for evidence to disprove allegations and claims,
- explain allegations or present an innocent explanation, and
- provide mitigating circumstances (information aimed at reducing the severity, seriousness, of something).

Saltbush Training Services also has an obligation to fully consider the substance of allegations and the response provided by parties before making a decision. Decisions must be communicated to the complainant and relevant persons subject of allegations in writing. This is to include advising these persons of their right to seek a third-party review of decisions made by Saltbush Training Services.

Where an allegation is made that involve alleged criminal or illegal activity and it is considered outside the scope and expertise of Saltbush Training Services to

investigate the matter, then in these circumstances Saltbush Training Services reserve the right to report these allegations to law enforcement authorities. Persons related to the matter involving alleged criminal or illegal activity will be advised in writing if this course of action is being taken.

Review by an independent third party

Saltbush Training Services provides the opportunity for the person making a complaint or seeking an appeal who is not satisfied with the outcomes of the complaints and appeals handling process to seek a review by an independent person. Before a person seeks a review by an independent person, they are requested to first allow Saltbush Training Services to full consider the nature of the complaint or appeal and to fully respond to the person in writing. If after this has occurred, the person is not satisfied with the outcome, they can then seek a review by an independent person. To request a review by an independent person, the complainant or the person making an appeal should inform the Training Manager of their request who will initiate the process with the Chief Executive Officer.

In these circumstances the Saltbush Training Services Chief Executive Officer will advise of an appropriate party independent of Saltbush Training Services to review the complaint (and its subsequent handling) and provide advice to Saltbush Training Services in regard to the recommended outcomes. The independent third-party is required to respond with their recommendations within fourteen (14) working days of their review being requested.

Where the Saltbush Training Services appoints or engages an appropriate independent person to review a complaint / appeal, the Saltbush Training Services will meet the full cost to facilitate the independent review.

Following an independent review, advice received from the independent person is to be accepted by Saltbush Training Services as final, advised to the person making a complaint or seeking an appeal in writing and implemented without prejudice.

Where a complaint is received by Saltbush Training Services and the Chief Executive

Officer feels that they may be bias or there is a perception of bias, then the complaint is to be referred directly to an independent third-party for consideration and response as outlined above.

Unresolved Complaints and Appeals

Where the person making a complaint or seeking an appeal is not satisfied with the handling of the matter by Saltbush Training Services, they have the opportunity for a body that is external to Saltbush Training Services to review his or her complaint or appeal following the internal completion of complaint or appeals process.

Learners who are not satisfied with the process applied by Saltbush Training Services may refer their matter to the following external agencies:

- In relation to consumer related issues, you may refer their complaint to the **Office of Fair Trading**.
- In relation to the delivery of training and assessment services, you may refer their complaint to the **National Training Complaints Service** via the following phone number: 13 38 73 or visit the website at <https://www.dewr.gov.au/national-training-complaints-hotline>
- In relation to matters relating to privacy, you may refer their complaint to the **Office of the Australian Information Commissioner** via the following details: <https://www.oaic.gov.au> or call on 1300 363 992

Withdrawing from a course

There are circumstances where a learner may finalise their enrolment early for personal or academic reasons. Where this is the case, the learner is requested to complete the form Application for Course Deferment / Transfer / Withdrawal. This provides the learner the opportunity to specify their reasons and select to indicate their preference to defer their enrolment, to transfer their enrolment to another course or to terminate their enrolment altogether. Where the enrolment is being deferred or terminated, learners will be issued a statement of attainment to recognise the outcomes they have achieved during their enrolment. A learner who defers and returns to complete a course will be eligible to recommence their training and receive a credit transfer for

any completed units of competency. The Chief Executive Officer will review these applications, where possible is to interview the learner to understand their circumstances and is to record their decision using the section provided on the application. Learners are to be informed of this decision in writing.

Learner who are not contactable or not responding

Where a learner is not contactable or fails to respond to requests by the Saltbush Training Services, the learner's enrolment may be terminated in absentia. This action may only be taken where the Saltbush Training Services has made every reasonable attempt to engage with the learner or contact the learner to seek their instructions about their intentions to continue with or complete the applicable course. Advice received from a learner via email or phone conversation communicating their request is to be accepted where the learner is not willing to complete an Application for Course Deferment / Transfer / Withdrawal. Email records and written records of phone conversations are to be retained on the learner's file as evidence of these expressed instructions from the learner.

Before a learner's enrolment can be terminated without their written or expressed consent the following protocol is to be followed:

- A minimum of three attempts (four weeks apart) must be made using the last known contact details (email, phone and mail) to contact the learner and issue the learner with a warning letter notifying them of the intent to terminate the enrolment.
- Where the learner fails to respond, the learner's enrolment is to be terminated and the learner's record within the student management system is to update with the outcome of "withdrawn" entered into each unit of competency that has not been completed at the time.
- Any final AQF certificate to which the learner is entitled is to be sent registered mail to the learner's last known mailing address. This should also be noted in the learner's enrolment record and a photocopy of the certificate retained on the learner's record.
- The learner's record is to be archived in

accordance with the Records Retention and Management Policy.

Applicable trainers are to be informed of the learner's enrolment termination and advised to inform the Training Manager if the learner makes contact.

Recognition of Prior Learning

In accordance with current RTO standards, Saltbush Training Services provides the opportunity for learners to apply to have prior learning recognised toward a qualification or units of competence for which they are enrolled.

What is recognition?

Recognition involves the assessment of previously unrecognised skills and knowledge that an individual has achieved outside the formal education and training system. Recognition assesses this unrecognised learning against the requirements of a unit of competence, in respect of both entry requirements and outcomes to be achieved. By removing the need for duplication of learning, recognition encourages an individual to continue upgrading their skills and knowledge through structured education and training towards formal qualifications and improved employment outcomes. This has benefits for the individual and industry. Most importantly, it should be noted that recognition is just another form of assessment.

Recognition guidelines

The following guidelines are to be followed when an application for recognition is received:

- Any learner is entitled to apply for recognition in a course or qualification in which they are currently enrolled.
- Learners may not apply for recognition for units of competence or a qualification which are not included in Saltbush Training Services scope of registration.
- Whilst learners may apply for recognition at any time, they are encouraged to apply before commencing a training program. This will reduce

unnecessary training and guide the learner down a more efficient path to competence.

- Learners who are currently enrolled in a training program are eligible to apply for recognition in that program at no additional charge.
- Assessment via recognition is to apply the principles of assessment and the rules of evidence.
- Recognition may only be awarded for whole units of competence.

Forms of evidence for recognition

Recognition acknowledges that workplace skills and knowledge may be gained through a variety of ways including both formal and informal learning or through work-based or life experience.

Like assessment, recognition is a process whereby evidence is collected, and a judgement is made by an assessor or assessment team. The judgement is made on evidence provided by candidates of the skills and knowledge that they have previously learnt through work, study, life and other experiences, and that they are currently using. It also includes evidence to confirm a candidate's ability to adapt prior learning or current competence to the context of the intended workplace or industry.

Forms of evidence toward recognition may include:

- Work records;
- Records of workplace training;
- Assessments of current skills;
- Assessments of current knowledge;
- Third party reports from current and previous supervisors or managers;
- Evidence of relevant unpaid or volunteer experience;
- Examples of work products;
- Observation by an assessor in the workplace;
- Performance appraisal; or
- Duty statements.

Many of these forms of evidence would not be sufficient on their own. When combined, with a

number of evidence items, the candidate will start to provide a strong case for competence. Saltbush Training Services reserves the right to require candidates to undertake practical assessment activities of skills and knowledge to satisfy itself of a candidate's current competence.

Credit Transfer

Credit Transfer is the recognition of learning achieved through formal education and training. Under the current RTO Standards, units of competency issued by any RTO are to be accepted and recognised by all other RTOs. Credit Transfer allows a learner to be issued a unit of competency based on successful completion of the unit which has been previously awarded.

Evidence requirements

If you are seeking credit transfer you are required to present your statement of attainment or qualification with a record of results for examination to Saltbush Training Services.

These documents will provide the detail of what units of competence you have been previously issued. You must provide satisfactory evidence that the statement of attainment or qualification is authentic, is yours and that it has been issued by an Australian RTO. Statements of attainment or qualifications should be in the correct format as outlined in the Australian Qualifications Framework. You are required to submit copies only which are certified as a true copy of the original.

Credit transfer guidelines

The following guidelines are to be followed in relation to credit transfer:

- Any learner is entitled to apply for credit transfer in a course or qualification in which they are currently enrolled.
- Learners may not apply for credit transfer for units of competence or qualification which are not included in Saltbush Training Services scope of registration.
- Whilst learners may apply for credit transfer at any time, they are encouraged to apply before commencing a training program. This will reduce unnecessary training and

guide the learner down a more efficient path to competence.

- The learner does not incur any fees for credit transfer and Saltbush Training Services does not receive any funding when credit transfer is granted.
- Credit transfer may only be awarded for whole units of competence. Where a mapping guide identifies a partial credit, this will not be considered for credit transfer and applicants will be advised to seek recognition.

Legislative and Regulatory Responsibilities

Saltbush Training Services is required to operate in accordance with the law. This means we comply with the requirements of legislative and regulatory requirements. The following legislation is a list of the Acts that Saltbush Training Services has recognised it has compliance responsibilities to. They also represent obligations to you as a learner whilst training with Saltbush Training Services.

During your day-to-day work and when participating in training, you will need to be aware of the relevant legislation that may impact on your conduct and behaviour.

Copies of State and Federal legislation can be found on the Internet at

<http://www.australia.gov.au/information-and-services/public-safety-and-law/legislation/states-and-territories> (State) and www.comlaw.gov.au (Federal).

The following is a summary of the legislation that will generally apply to your day-to-day work and training.

Work Health and Safety Act 2011

The main object of this Act is to provide for a balanced and nationally consistent framework to secure the health and safety of workers and workplaces. The WHS Act protects workers and other persons against harm to their health, safety and welfare through the elimination or minimisation of risks arising from work or from types of substances or plant.

The WHS Act covers workers by providing a nationally uniform work health and safety laws. This includes employees, contractors, sub-contractors, outworkers, trainees, work experience learners, volunteers and employers who perform work.

The WHS Act also provides protection for the general public so that their health and safety is not placed at risk by work activities.

Section 29 of the WHS Act requires that any person at a workplace, including customers and visitors, must take reasonable care of their own health and safety and that of others who may be affected by their actions or omissions.

They must also cooperate with any actions taken by the person conducting business or undertaking to comply with the WHS Act and WHS Regulation.

Privacy Act 1988

The Privacy Act is supported by the Australian Privacy Principles which came into effect on 12th March 2014. The object of Australian Privacy Principles is to ensure businesses and government agencies manage personal information in an open and transparent way.

Review the section within this handbook that relates to privacy protection. It provides you with information about:

- the kinds of personal information that the entity collects and holds;
- how the entity collects and holds personal information;
- the purposes for which the entity collects, holds, uses and discloses personal information;
- how an individual may access personal information about the individual that is held by the entity and seek the correction of such information;
- how an individual may complain about a breach of the Australian Privacy Principles and how the entity will deal with such a complaint; and
- whether the entity is likely to disclose personal information to overseas recipients.

Disability Discrimination Act 1992

Sect 5 - Disability Discrimination

(1) For the purposes of this Act, a person (discriminator) discriminates against another person (aggrieved person) on the grounds of a disability of the aggrieved person if, because of the aggrieved person's disability, the discriminator treats or proposes

to treat the aggrieved person less favourably than, in circumstances that are the same or are not materially different, the discriminator treats or would treat a person without the disability.

For the purposes of subsection (1), circumstances in which a person treats or would treat another person with a disability are not materially different because of the fact that different accommodation or services may be required by the person with a disability.

Sex Discrimination Act 1984

Objects The objects of this Act are:

- to give effect to certain provisions of the Convention on the Elimination of All Forms of Discrimination Against Women; and
- to eliminate, so far as is possible, discrimination against persons on the ground of sex, marital status, pregnancy or potential pregnancy in the areas of work, accommodation, education, the provision of goods, facilities and services, the disposal of land, the activities of clubs and the administration of Commonwealth laws and programs; and
- to eliminate, so far as possible, discrimination involving dismissal of employees on the ground of family responsibilities; and
- to eliminate, so far as is possible, discrimination involving sexual harassment in the workplace, in educational institutions and in other areas of public activity; and
- to promote recognition and acceptance within the community of the principle of the equality of men and women.

Age Discrimination Act 2004

The objects of this Act are:

- to eliminate, as far as possible, discrimination against persons on the ground of age in the areas of work, education, access to premises, the provision of goods, services and facilities, accommodation, the disposal of land, the administration of Commonwealth laws and programs and requests for information; and
- to ensure, as far as practicable, that everyone has the same rights to equality before the law, regardless of age, as the rest of the

community; and

- to allow appropriate benefits and other assistance to be given to people of a certain age, particularly younger and older persons, in recognition of their particular circumstances; and
- to promote recognition and acceptance within the community of the principle that people of all ages have the same fundamental rights; and
- to respond to demographic change by:
 - removing barriers to older people participating in society, particularly in the workforce; and
 - changing negative stereotypes about older people.

Racial Discrimination Act 1975

This Act gives effect to Australia's obligations under the International Convention on the Elimination of All Forms of Racial Discrimination. Its major objectives are to:

- promote equality before the law for all persons, regardless of their race, colour or national or ethnic origin, and
- make discrimination against people on the basis of their race, colour, descent or national or ethnic origin unlawful.

Copyright Act 1968

Copyright is a type of property that is founded on a person's creative skill and labour. It is designed to prevent the unauthorised use by others of a work, that is, the original form in which an idea or information has been expressed by the creator.

Copyright is not a tangible thing. It is made up of a bundle of exclusive economic rights to do certain acts with an original work or other copyright subject-matter. These rights include the right to copy, publish, communicate (eg. broadcast, make available online) and publicly perform the copyright material.

There is no general exception that allows a work to be reproduced

without infringing copyright. Where a part of a work is copied, the issue is whether a substantial part of that work has been reproduced and thus an infringement has occurred. However, there is a 10% rule which applies in relation to fair dealing copying for the purposes of research or study. A reasonable portion of a work may be copied for that purpose, and a reasonable portion is deemed to be 10% of a book of more than 10 pages or 10% of the words of a work in electronic form.

Fair Work Act 2009

The main objectives of this Act are to provide a balanced framework for cooperative and productive workplace relations that promote national economic prosperity and social inclusion for all Australians by:

Providing workplace relations laws that are fair to working Australians, are flexible for businesses, promote productivity and economic growth for Australia's future economic prosperity and take into account Australia's international labour obligations;

Ensuring a guaranteed safety net of fair, relevant and enforceable minimum terms and conditions through the National

Employment Standards, modern awards and national minimum wage orders;

Enabling fairness and representation at work and the prevention of discrimination by recognising the right to freedom of association and the right to be represented, protecting against unfair treatment and discrimination, providing accessible and effective procedures to resolve grievances and disputes and providing effective compliance mechanisms.

National Vocational Education and Training Regulator Act 2011

This legislation provides that basis for the regulation of Registered Training Organisations in Australia. The legislation provides the basis for the establishment of the National VET Regulator who are the registration authority for RTOs. A core component of this legislation is that it defines the condition for the registration of an RTO which include:

- compliance with the VET Quality Framework
- satisfying Fit and Proper Person Requirements
- satisfying the Financial Viability Risk Assessment Requirements
- notifying National VET Regulator of important changes
- cooperating with National VET Regulator
- compliance with directions given by the National VET Regulator